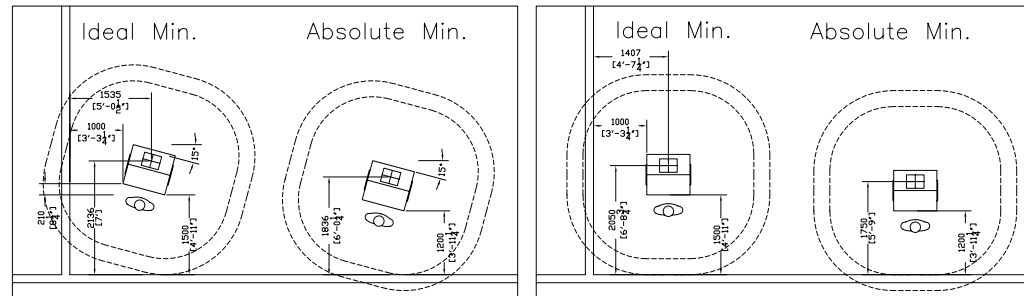


Teaching Station Locations
Screen Locations
alterations from existing AV plan
to meet data sheets/UT standard installation
as discussed @ AV meeting 090922

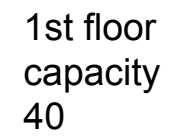
per UofT/OSM
burl.crone@utoronto.ca
090930

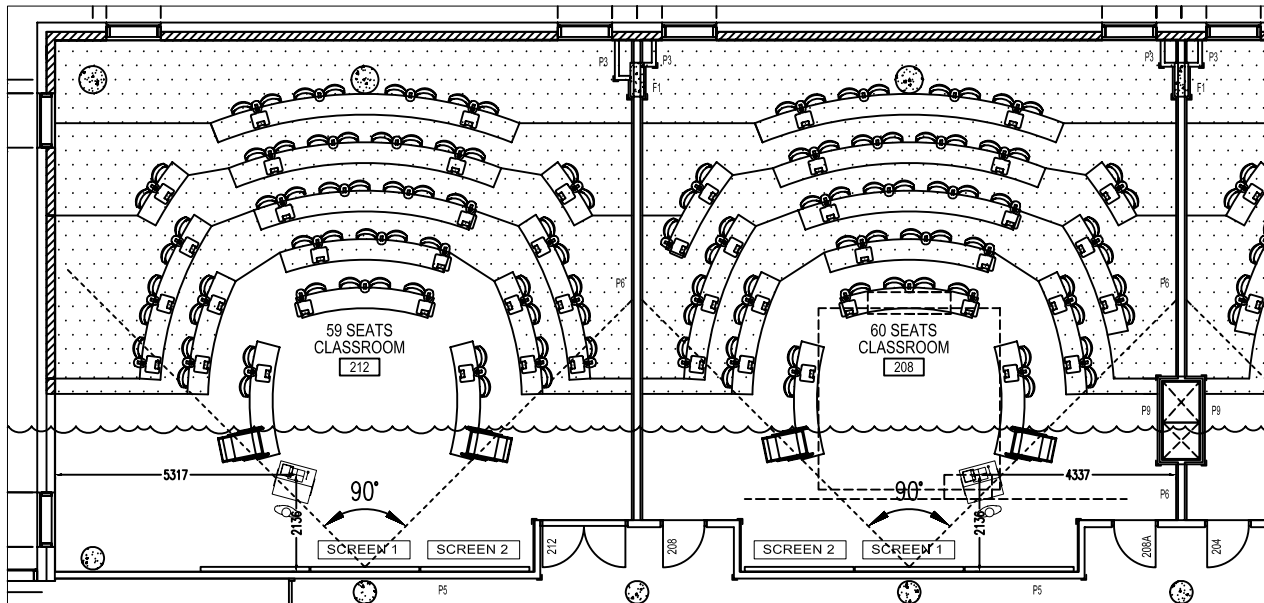


Teaching Station location

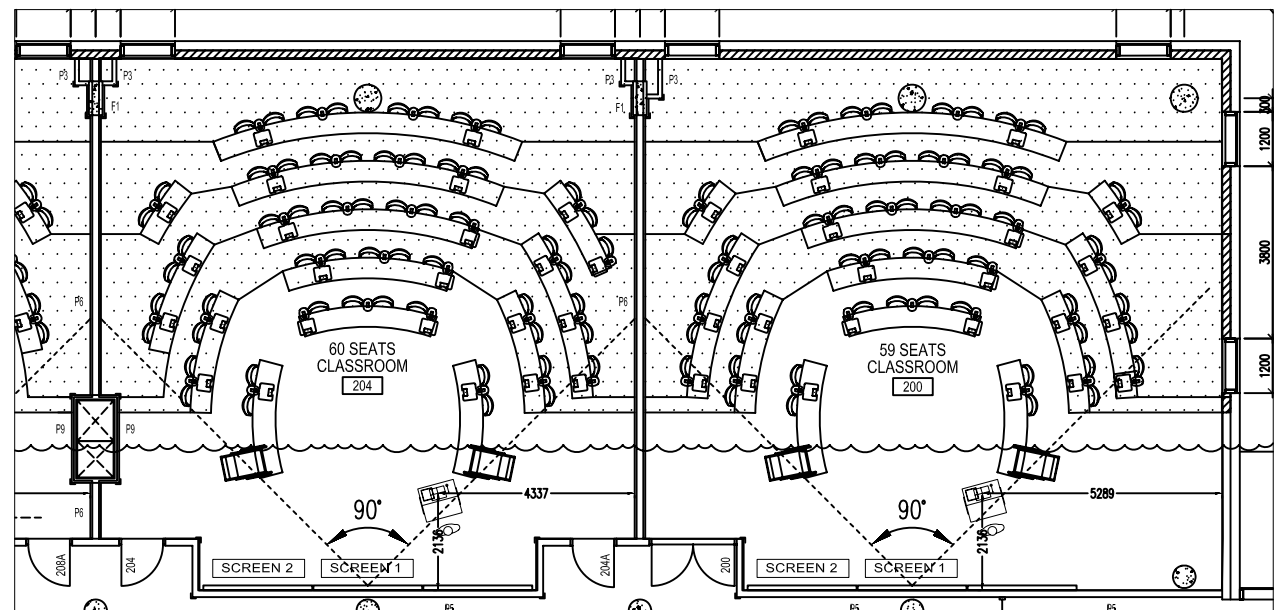
- min. 1500mm from screen wall (ideal min.)
- min. 1200mm from screen wall (absolute min.)
- min. 1000mm from side wall
- 15 deg. rotation (standard rotation, 210mm offset)

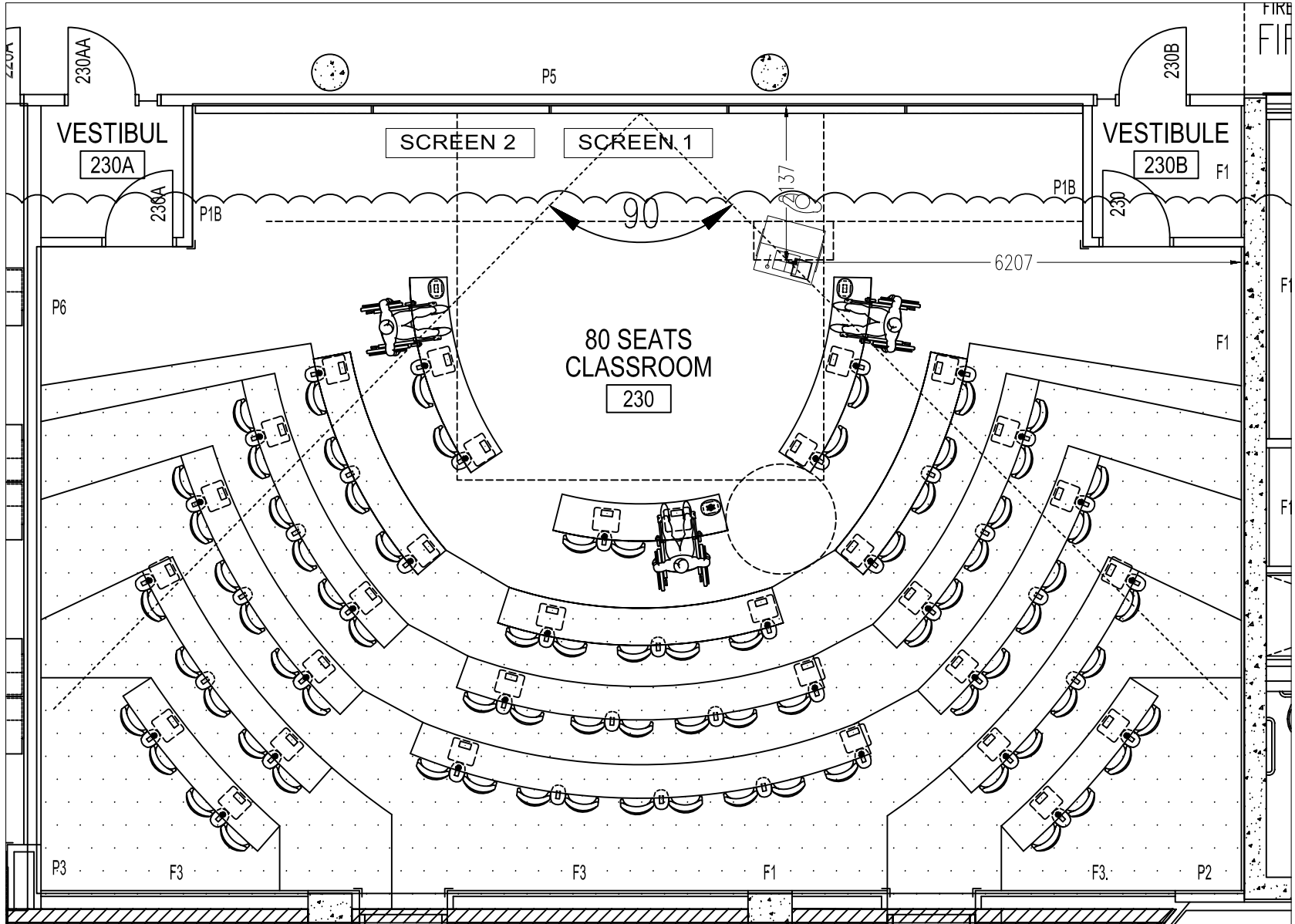
- ☐ conduit feed location centre (square to room)
 - min. 2050 from screen wall (ideal min.)
 - min. 1750 from screen wall (absolute min.)
 - min. 1400 from side wall
 - rotation as teaching station
- ☐ conduit feed location centre (15 deg rotate)
 - min. 2140 (7') from screen wall (ideal min.)
 - min. 1830 (6') from screen wall (absolute min.)
 - min. 1530 (5') from side wall
 - rotation as teaching station





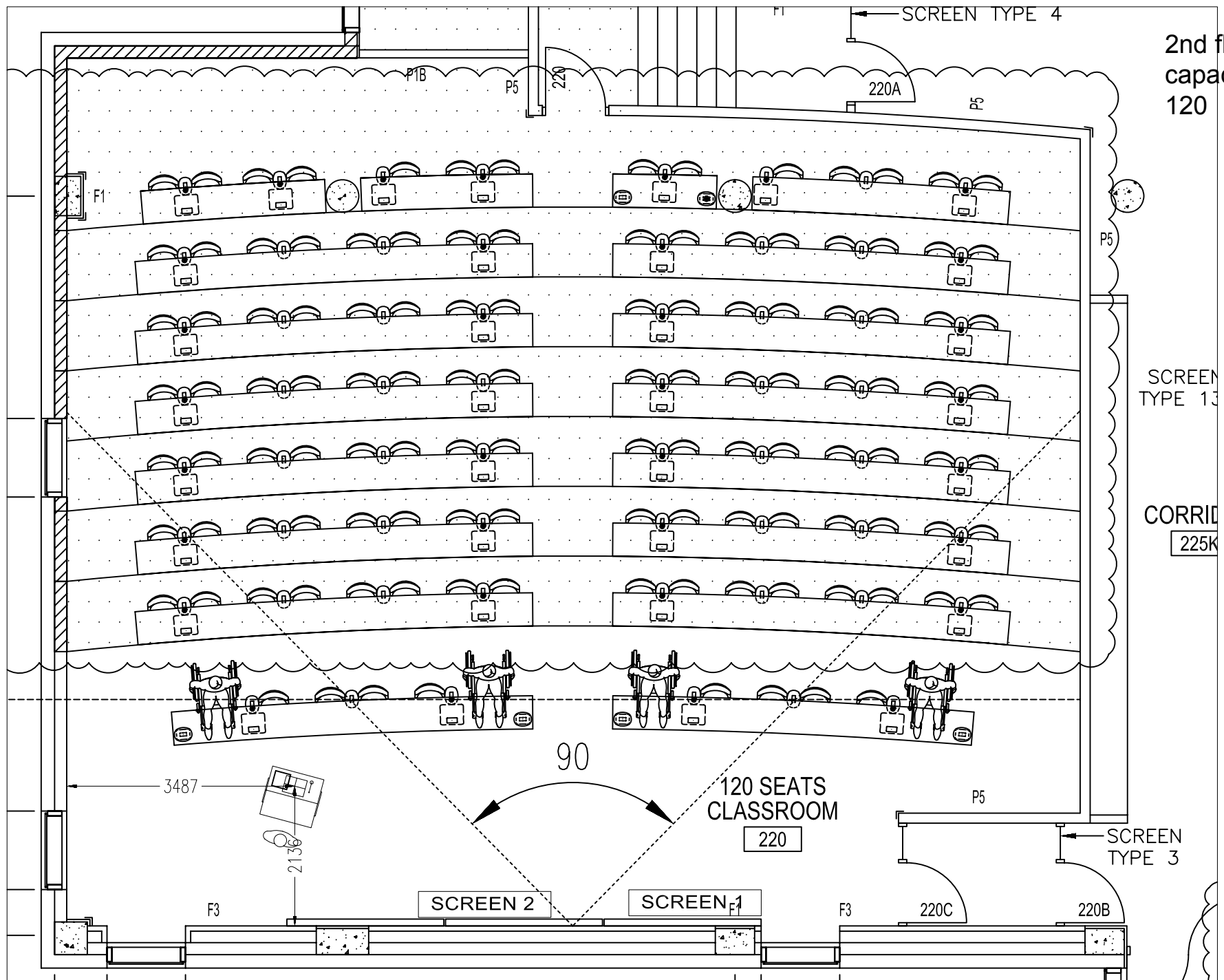
2nd floor
capacity
60





2nd floor
capacity
80

CORRID
225K



3rd floor
skills

